

Kia ora, whanau.

First thing Monday morning and the kids had settled quickly into the new term. We did have a few kids missing due to ill-health though.

When a child should be kept home:



And - as far as we could tell - most of the absentees will have met Dr Seymour's new guidelines for how to tell if your kid is too sick to go to school... phew!

In the bigger picture, things are tough for many in NZ right now. They are considerably grimmer in several places overseas; and they're absolutely appalling in Ethiopia, Gaza, and Ukraine. With all that ugliness going on; it's nice to have largely positive news to share in the first newsletter for the term.

TOD cancelled...

For reasons beyond our school's control - the Teachers Only Day originally scheduled for Friday 31 May has been cancelled ... it'll just be business as usual.

Whichever works best for you...



Phone 03 217 9332
Text 022 3179332



Email admin@waverleypark.school.nz



or any of the Messenger, Skool Loop, Seesaw, MUSAC Edge apps: we don't mind how you keep in touch



Need to pay us? 12 3154 0103559 00



Scholastic Booklets have gone out this week - orders can be made at the school office, cash or eftpos, or online at



Every Child Deserves a Good Book

<https://www.scholastic.co.nz/parents/book-club-parents/>
Orders close 14 May



Ngā Hau e Whā ki Murihiku ...

Ngā Hau e Whā ki Murihiku's debut performance at the Waitaha Regional Kapa Haka competition last weekend was a real stunner. Featuring our Whaea Katy; Meiana's mum Metiria (awarded top Manukura Wahine - female leader); and Mahtel's mum Alissa: the team's performance earned them one of four Waitaha places at Te Matatini - the national finals - next February. The Tuinga Tahi / Waverley Park connection with Ngā Hau e Whā ki Murihiku does not end there. Whaea Awhi is one of the creators of the team's kākahu, and a key part of the support team. Congratulations, koutou - a spine-tingling performance and a great outcome - we're proud of you all.



Nga wahine toa o Ngā Hau e Whā Ki Murihiku in full flight - you can watch them in the Waitaha regional finals on Maori TV on Demand.

Kia kaha, kia maia, kia manawanui!



April was a good month for a couple of other ex-Waverley Park kids too. Awhi's daughter Tarryn (left) and her good mate, Sualo - not an ex-Waverley kid but certainly good enough to be one - have been selected to be part of the New Zealand Rugby League's Southern Zone Rugby League Warriors Academy: the first of the academies to include female players.

Well done ladies! Being on the NZRL and Warriors' radar already; getting all the support the academy programme provides? Priceless. The future? Looking good. Meantime...



Huge congratulations to Cormac Buchanan, who - in Misano, Italy - took another major step forward in his ever-blossoming high-speed career with a third-place finish; in the process, becoming the first-ever Kiwi to make it to the Junior GP World Championship podium. Tumeke, Cormac! Waverley Park is still watching you ... closely... very closely...

The calendar...

May 16	Phoenix cross-country - Bluff
17	Assembly: Kia kaha - 10.10am
23	Phoenix cross-country: back-up date
27	Board of Trustees: 7.30pm
28 - 30	John Parsons - keeping kids safe online
June 01 - 03	King's Birthday weekend
07	Assembly: Kia maia - 10.10am
14	Southland X-country championships
28 - 30	Matariki weekend
July 05	Assembly: Kia manawanui - 10.10am
	Mid-year reports out
	Term 2 ends: 3.00pm
22	Term 3 starts: 8.50am
29	Mid-year progress interviews week

Until next week - ka kite, Kerry Hawkins & staff

FREE FLU & COVID VAX - NO APPT NEEDED! AWARUA WHANAU SERVICES

AWARUA WHANAU
NAU MAI HAERE MAI WHANAU

WALK-IN FLU / COVID VACCINATION CLINICS

EVERY MONDAY FROM
APRIL 15TH TO MAY 27TH

4PM - 7PM
190 FORTH STREET

FREE FOR EVERYONE OVER 12 YEARS
MMR AVAILABLE TOO

Need more info?
0800 292 782
admin@awarua.nz

Waverley Park School - proud to be supported by the





Term 2 AUTUMN MENU

Ka Ora Ka Ako Programme

MONDAY

WEEKS 1, 3, 5, 7, 9:
Roast Chicken with Mash,
Gravy and Vege Medley

WEEKS 2, 4, 6, 8, 10:
Southern Chicken with Mash,
Gravy and Coleslaw

WEDNESDAY

WEEKS 1, 3, 5, 7, 9:
Nacho Jacket Potato

WEEKS 2, 4, 6, 8, 10:
Spaghetti Bolognaise

FRIDAY

WEEKS 1, 3, 5, 7, 9:
Nan's Cheeky Cheeseburger
with Wedges

WEEKS 2, 4, 6, 8, 10:
Nan's BBQ Pulled Roll
with Zesty Slaw

TUESDAY

WEEKS 1, 3, 5, 7, 9:
Ham & Cheese Filled Roll
with Muffin

WEEKS 2, 4, 6, 8, 10:
Cranberry Ham and Cheese Wrap
& Fruit Yoghurt

THURSDAY

WEEKS 1, 3, 5, 7, 9:
BBQ Chicken Bento Bowl

WEEKS 2, 4, 6, 8, 10:
Chicken Sushi Bento Bowl

SPECIAL DIETS

All special diets are provided as
per individual needs.
It is important that all ākonga are
included alongside their peers in
Ka Ora, Ka Ako

Lisa Dolly Limited



Donovan Park

Start anytime between
11.30AM - 1PM

SUNDAY **05 MAY** 2024



Coaching + Orienteering
Registration: Waikiwi Rugby Grounds

Isla has planned a short and a long Dash course round Donovan Park, White/Yellow.

Coaching at 10.30am for those new to orienteering, especially students competing in the Southland Champs, but everyone is welcome.

Meet: Waikiwi Rugby Grounds car park, Bainfield Road.

Cost: Coaching is free / Dash map \$5.

RSVP: email southlandorienteeringclub@gmail.com if coming to coaching.

If not doing the training, just register on the day, at the event.

Registration open from 11.30am-1pm.

www.southlandorienteeringclub.co.nz

Suitable for all ages, beginners always welcome.



Parenting Programme



For parents of children
aged 0 - 18 years

Wednesdays from May 8
(8 sessions)
9.30am - 11.30am

Family Works,
183 Spey St, Invercargill

For more information
phone Nicole on
03 211 8272 or email
pp@familyworkssld.nz



Southland Emergency Services Day

Fundraiser for the Westpac
Chopper Appeal 2024

GOLD COIN ENTRY



Displays from:

- Southern District Police
- Southland Fire and Emergency
- Hato Hone St John Invercargill
- Coast Guard
- Otago Southland Rescue Helicopter (approx landing 11am)



Please bring your change for
our donation buckets and the
Sausage Sizzle hosted by the
Waikiwi Lions.

All funds donated to:



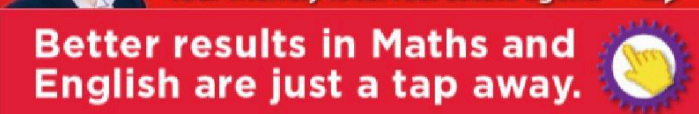
Proudly supported by:
Westpac Southland & Good Tech Team



Saturday 11th
May
@ Surrey Park
10am - 2pm

Waverley Park School

Thanks to the below businesses for sponsoring our school app:



45 Fibre

~ DEEP SOUTH FIBRE FESTIVAL

Come along to the
Gore Town & Country Club
2 Bury Street, Gore
on Saturday, 4th of May

10 am - 3 pm
Free entry

We'll have a kids corner,
where all the cool crafts will be.

(No cost to your parents.)

Have a go at:
weaving, knitting, cross stitch
pompom animals,
plaiting rats tails,
daisy-making

Fibre Animals
to meet and pet

Celebrating all things fibre.
Email: 45fibre@gmail.com
Phone: 021 522 502

With thanks to our sponsors:
Gore District

TE REO MĀORI IN MURIHIKU SCHOOLS WHĀNAU MEETING

What is your aspiration for Te Reo Māori in our schools in Southland?

Currently there are limited options for tamariki to learn Te Reo Māori in our schools.
Are you happy with this? Would you like to see more?

We want to hear from whānau about your views regarding Te Reo Māori
provision in our schools in the future.

WE'D LOVE TO SEE YOU AT ONE OF THESE MEETINGS:

6th May 2024 - BLUFF

10am - 11.30am
The Tari
88 Gore Street, Bluff.

6.30pm - 8pm
Te Rau Aroha Marae
Bradshaw St, Bluff.

9th May 2024 - INVERCARGILL

10am - 11.30am
Te Tomairangi Marae
Eye Street, Invercargill
(Park in big car park behind basilica).

6.30pm - 8pm
Te Tomairangi Marae
Eye Street, Invercargill
(Park in big car park behind basilica).

Register here to attend:

<https://forms.office.com/r/MPEJKDXCTj>

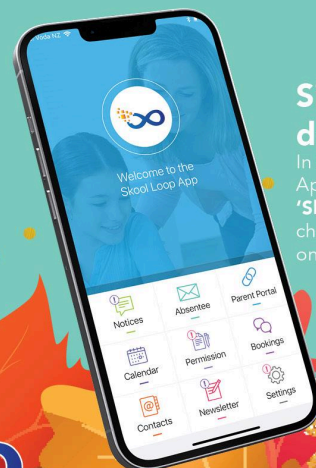
keri@kerimihi.nz

LEAF

THE PAPER NOTICES BEHIND

Download our Skool Loop app to keep
up to date with school information.

Notices, newsletters, absentee
notifications and much more.



Simple free
download

In Google play &
App Store search
'Skool Loop' &
choose our school
once installed.

